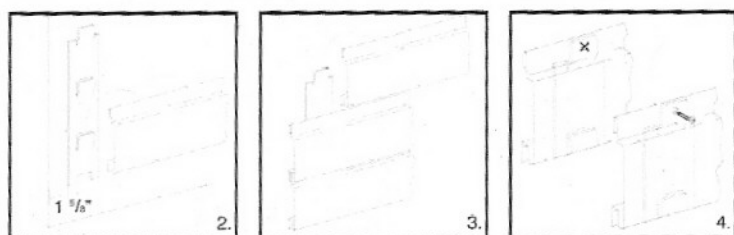
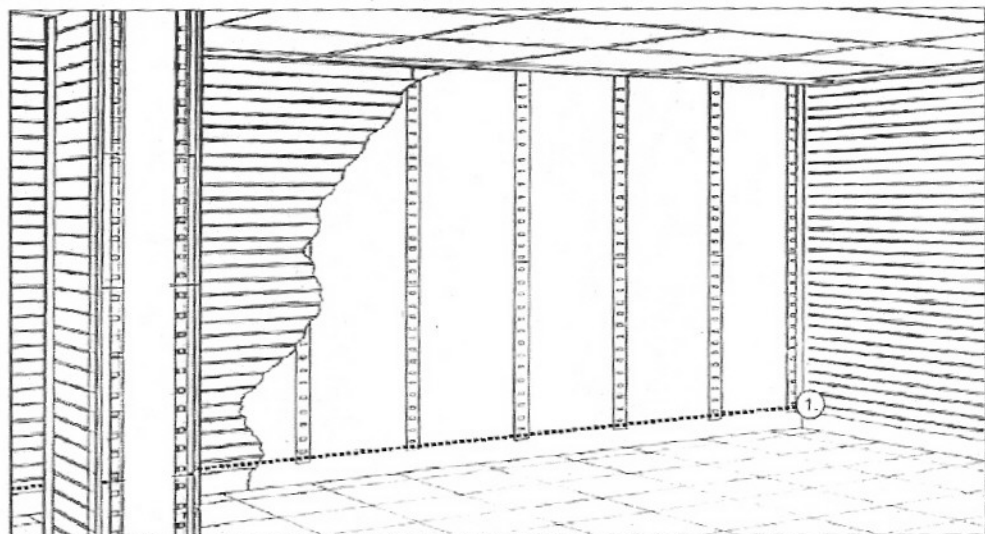


One of the key benefits to MegaWall is it's ease of assembly. We designed our slatwall so that not only can it be installed with just a few tools, but it also only takes 1 or 2 people.



1. Laser line or chalk line above the baseboard as shown in illustration 1 for installation of Hanger Strips. It is extremely important the hanger strips be level to each other.
2. Starting no less than  $1\frac{5}{8}$ " from either edge of the wall (this distance is required at each end to allow for trim application), install 4' or 6' Hanger Strips evenly at laser line. If installing over drywall or MDF, Hanger Strips must be located over a stud. The distance between hanger strips must not exceed 16" on center (o/c). Make sure to allow  $\frac{5}{8}$ " clearance above top tab of hanger strip to the ceiling to provide space for installation of the top piece of MegaWall profile later. Above the center of the top end of each hanger strip place a light pencil mark on the wall (for future reference).
3. Install the first MegaWall profile (slat) by interlocking top of profile with bottom hanger tab as shown in illustration 2. Build from the bottom up by interlocking the bottom tab of each new profile with the top of each prior profile (while locking the top tab of new profile on the next hanger strip tab). See the illustration 3 for reference. Continue one profile at a time to the top.
4. Once slats have been installed completely to the top, insert and secure trim to the sides. In some instances trim may need to be installed before profiles due to clearance problems.
5. Install hanger strips on remaining walls in same method as above. Make sure any inside corner trim combining two adjacent walls together is in place before any MegaWall slats are installed to the hanger strips.
6. Using the marks made in Step 2 to locate hanger strips, anchor the top piece of MegaWall by drilling a hole through the profile and top tab of a hanger strip. Then run a screw through the profile and hanger strip top tab all the way into the stud (see illustration 4). Each top profile requires a minimum of two anchor screws spaced appropriately.